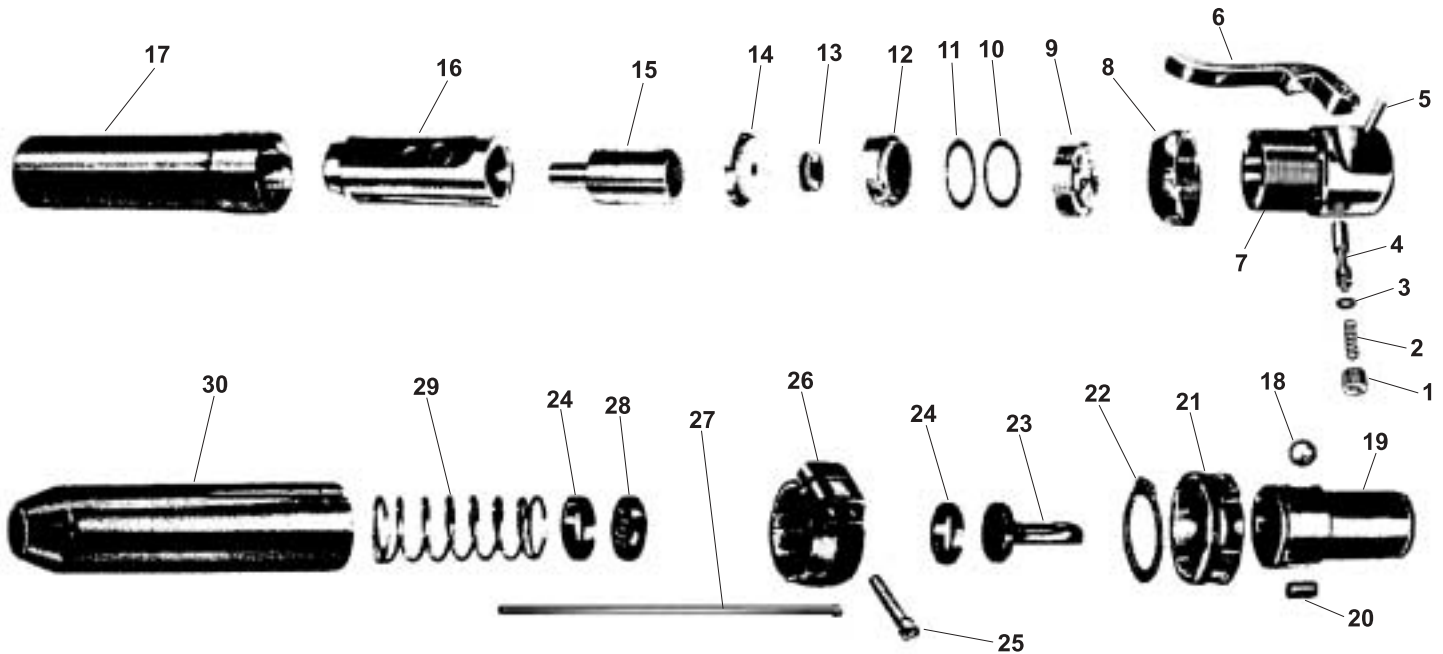




PARTS LIST FOR SC80910 SCALERS

Form Z659
Date 1-01/A
Page 1 of 1



| Fig. No. | Part No. | Description |
|----------|----------|--------------------|
| 1. | 601985 | Valve Plug |
| 2. | 602002 | Valve Spring |
| 3. | 601993 | "O" Ring |
| 4. | 602001 | Throttle Valve |
| 5. | 601998 | Pin |
| 6. | 601986 | Throttle Lever |
| 7. | 602008 | Backhead |
| 8. | 602007 | Locknut |
| 9. | 602012 | Spacer |
| 10. | 601997 | Shim (.010") |
| 11. | 601996 | Shim (.005") |
| 12. | 601988 | Valve Lid |
| 13. | 601989 | Cycling Valve |
| 14. | 601995 | Cycling Valve Case |
| 15. | 601994 | Piston |
| 16. | 601987 | Cylinder Sleeve |
| 17. | 602013 | Housing Cylinder |

| Fig. No. | Part No. | Description |
|----------|----------|------------------------------|
| 18. | 601992 | Ball |
| 19. | 601990 | Chisel Sleeve |
| 20. | 602000 | Rubber Lock |
| 21. | 601999 | Chisel Lock Ring |
| 22. | 601991 | Retaining Ring |
| 23. | 602003 | Anvil |
| 24. | 602006 | Buffer Holder (2)* |
| 25. | 602011 | Screw Socket Head (2)* |
| 26. | 602010 | Housing Clamp |
| 27. | 2262 | Needle Set of 19 (7" X .125) |
| 28. | 602004 | Needle Holder |
| 29. | 602005 | Needle Spring |
| 30. | 602009 | Needle Housing |

NOT SHOWN:

601858 Inlet Bushing 1/4" X 1/4" NPT

*Order Quantity As Required

FURNISH CATALOG, SERIAL, AND MODEL NUMBER
WHEN ORDERING PARTS

SIoux TOOLS INC.

2901 FLOYD BOULEVARD ■ PO BOX 507 ■ SIOUX CITY, IOWA 51102-0507 USA ■

Printed In U.S.A.